

HIGH END ACCOMMODATION



Uganda and Rwanda have a variety of accommodation with different standards ranging from 5 star luxury hotels, lodges and tented camps to low budget affordable basic guest houses or camping. These can be found in both Kampala the capital city and most of the national parks in the country. Churchill designs your itinerary based on the desired standard of accommodation and budget and makes sure that you get the real value for your money. We use elegant and unique lodges, hotels and camps. The lodges, camps and hotels we use, pride themselves on the excellence of their personalized service and friendliness of their staff. Every effort has also been made to provide the best cellar possible within the restrictions of logistics and climate. We ask all our clients to advise if they have any dietary requirements in advance to make their stay more enjoyable.

Accommodations are categorized as follows; high end/luxurious (4/5 star), medium class (3 star), low budget (basic but clean guest houses) and then camping. Below is a sample of the different kinds of accommodations in Uganda & Rwanda. For more details you can read the "Uganda, The Bradt Travel Guide", Footprint "Uganda Handbook, "Lonely Planet East Africa" and the Uganda hotels and lodges website.

CLOUDS LODGE

Clouds Mountain Gorilla lodge is remote, beautiful and intimate at over 2,000 metres above sea level located in the south western sector of Bwindi Impenetrable forest. Clouds Mountain gorilla lodge main office is situated in Bugolobi, Kampala, a leafy suburb a little away from the hustle and bustle of the center of town, where all reservations, marketing, vehicle maintenance, accounting, purchasing and other logistics for the group take place.

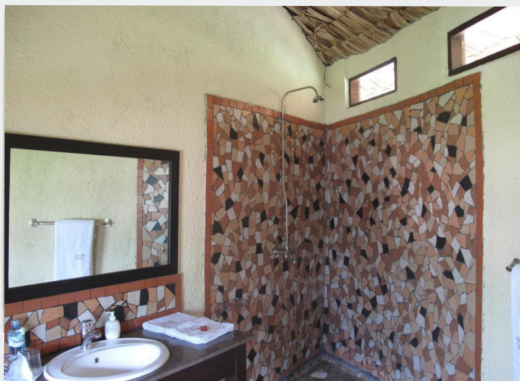


CLOUDS LODGE



MAHOGANY SPRINGS LODGE

Mahogany springs lodge is a high end lodge located in the southern sector of Bwindi set back on the pristine waters of the Munyanga river and facing the Impenetrable forest the natural setting of Mahogany Springs is beyond imagination. Mahogany Springs offers privacy and serenity blended with optimal comfort in a spectacular setting and some of the most luxurious accommodation in East Africa the feeling that you will experience when staying here is beyond compare. The exotic gardens and intricately designed stone pathways leading to the river invite you to explore every corner of this magical place uncovering the various surprises along the way such as the Home grown vegetable garden.



MAHOGANY SPRINGS LODGE



MIHINGO LODGE

Mihingo is a luxurious, family owned lodge in a magical setting adjacent to Lake Mburo National Park. Perched high on a rocky kopje, whose pre-Cambrian granite boulders were formed over 500 million years ago, it has spectacular views over a vast savannah landscape. Designed to blend in with its fragile surroundings, this environmentally friendly lodge offers comfort, relaxation and the experience of being at one with nature. An infinity pool overlooks the valley below where buffalo, eland, impala, warthogs, bush buck and zebra can be seen at the waterhole. On the rocks you may have the rare chance of seeing the resident family of Klipspringers.



MIHINGO LODGE



MWEYA SAFARI LODGE

Mweya Safari Lodge offers visitors an unforgettable experience. Located on a peninsula within the heart of the Queen Elizabeth National Park, Mweya Safari Lodge is surrounded by the magical Rwenzori Mountains aptly described as the 'Mountains of the Moon'. To the east, lie the guardians of the birthplace of mankind, the Great Rift Valley hills, separated from the Mountains of the Moon by the meandering Kazinga Channel.



MWEYA SAFARI LODGE



NDALI LODGE

One of a kind place with lovely rooms, great staff, terrific (and fresh) food and breathtaking views. An absolutely unique and wonderful experience and a homey, relaxing one as well. It is an impressive driveway into Ndali Lodge along the rim of a crater to the lodge which sits on the rim above a crater lake. The view is stunning of the Crater Lake out one side and the Rwenzori's (The Mountains of the moon) out the other They have large cottages with two queen beds, plenty of chairs and storage areas and a fabulous bathroom with views to die for from the bath even! There is solar powered lighting supplemented by candlelight if required and other than being a bit dim we never missed having regular electricity They have large baths with hand held showers over them and separate showers as well



NDALI LODGE



PAPAYA LAKE LODGE

A place surrounded by the lush, evergreen landscapes of the Ugandan Great Crater Lakes region, set between two extinct volcanoes, close by the turquoise waters of Lyantonde and Kifuruka lakes, and with thrilling views over the majestic Rwenzori Mountain Range. An oasis of nine luxurious cottages, a restaurant and beautiful pool set on its own scenic terrace; a place established with great passion, esteem for local culture and the high attention detail that makes life worth living. Established by a family of three – Magdalena, Sebastian and their son Alek - recently joined by little Leon- drawn to abandon their European life to find a new home in the living heart of Africa; a home inspired by its surroundings and soaked with all the best Uganda has to offer, yet beautifully refreshed by their own unique style, and the highest standards of service.



PAPAYA LAKE LODGE



MEDIUM CLASS ACCOMMODATION



KIGARAMA WILDERNESS LODGE

Kigarama Wilderness Lodge is a small community lodge focused on sustainability allowing clients to get close and connect with the local communities through optional activities such as cow milking, cooking lessons, thus allowing them to experience the diversity and customs of the local culture as a result contributing to preserving of culture for future. While at Kigarama Wilderness lodge you have an opportunity to embrace breath taking panoramic views of the Lake Mburu National Park, coupled with nature overhead and experience wildlife up close grazing at your door step. In addition, you will often have a few of the animals from the park reaching the lodge creating beautiful memorable scenes of adventure. Kigarama Wilderness lodge is committed to offering great accommodation services through sustainable and inclusive tourism practices at a 5 star rating. We have a total number of 12 rooms/cottages so far comprising of 2 family rooms and the rest being used as doubles, singles or triples. All our rooms are a state of comfort crafted to be your home away from home and well equipped with spacious ensuite shower rooms.



KIGARAMA WILDERNESS LODGE



LAKE MULEHE GORILLA LODGE

Lake Mulehe Gorilla Lodge is one of the Mid range lodges in Uganda located in Kisoro, southern sector of Bwindi Impenetrable Forest, approximately 1793m above sea level, and where the habituated Rushaga, and Nkuringo gorilla groups are to be found as well as Mount Mgahinga National Park. It has 12 comfortable, ensuite rooms each with private verandas and breathtaking panoramic views of both the lake and the mountains Muhabura, Mgahinga and Sabinyo. Offering a high level of service and great value for money, each room has an individual style which reflects the original African architecture. The guest areas are cozy and welcoming with an open fireplace for chilly nights and the lodge offers a massage service, bliss for tired muscles after a full days trekking.



LAKE MULEHE GORILLA LODGE

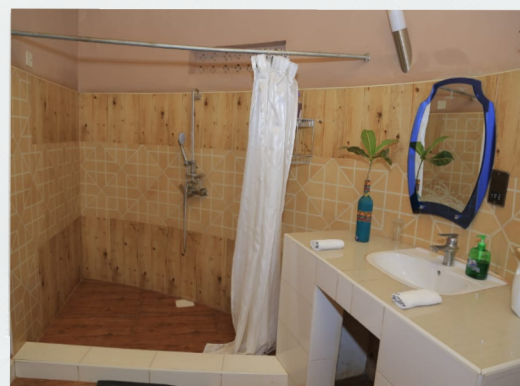


HOIMA CULTURAL LODGE

Surrounded by beautiful spacious gardens and tranquil environment, The Hoima Cultural Lodge is a newly opened lodge situated in Hoima district, the northern part of Western Uganda opposite the Bunyoro Palace. Hoima Cultural Lodge is a perfect break from the 10 hours drive on the dirt road between Murchison falls and Kibale which helps clients rejuvenate for the rest of their journey. The lodge offers spacious ensuite grass thatched cottages ideal for couples and families with each room brightly colored and furnished with African Art pieces which give clients an African feel.



HOIMA CULTURAL LODGE



PAKUBA SAFARI LODGE

Pakuba Safari Lodge is nestled on the Eastern Bank of the Albert Nile in Murchison Falls National Park overlooking the spectacular River Nile. The lodge location affords panoramic views of the mighty River Nile, sweeping vistas of the surrounding riverine forest below and captivating surrounding wilderness where travelers get the chance to sight Giraffes, Elephants, Antelopes and occasionally Leopards that pay regular visits to the lodge. Our tastefully furnished rooms offer comfort, style and serenity.



PAKUBA SAFARI LODGE



ICUMBI GORILLA LODGE

Ichumbi derived from the local Rufumbira dialect means “ a cool, comfortable home “. The lodging facility that is just 10 minutes' walk to Rushaga gate of Bwindi Impenetrable National Park, has a spectacular view of the park right from your room! It is designed to provide you with high end comfort and relaxation to be able to enjoy your Gorilla tracking experience, go birding watching and enjoy forest life surrounded by impressive landscape. At Ichumbi, your comfort is our ultimate goal.



ICUMBI GORILLA LODGE



TWIN LAKES SAFARI LODGE

Twin Lakes Safari Lodge is a rustic and intimate lodge set in the beautiful surroundings of the Bunyaruguru great crater field in Uganda. Located just outside the Queen Elizabeth National park at 270m above the plains, the breath taking views of the Queen Elizabeth National Park, Lakes Edward and George, the Rwenzori Mountain ranges, Sunrise and Sunset is simply amazing. You just have to see it for yourself



TWIN LAKES LODGE

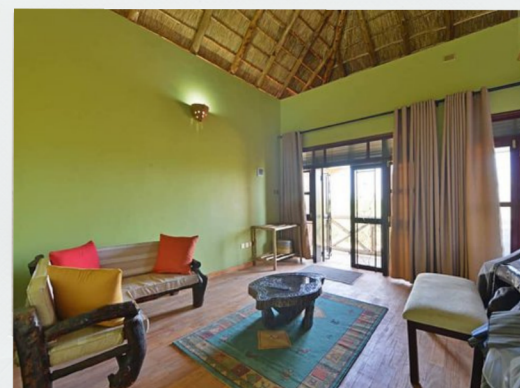


BUFFALO SAFARI LODGE

Buffalo Safari Lodge is located near the magical Kazinga channel, 1km off Kasese-Mbarara road. The resort lies in 25 private acres of wilderness, a serene environment full of spectacular flora and fauna – elephant, buffalo, hippo, warthog and many bird species, all at the glance of an eye. With eye-catching facilities, with a lounge that gives a spectacular view of the lodge privately owned Lake Rubirizi, Kazinga Channel River, and the world renown Queen Elizabeth Park.



BUFFALO SAFARI LODGE



TILENGA SAFARI LODGE

A haven of comfort and serenity, Tilenga Safari Lodge is set on the northern park boundaries of Murchison Falls National Park. It is located in one of the most breathtaking parts of Uganda just 1.7km away from Tangi gate on the main Karuma-Pakwach road. One has to watch out for its signpost a few kilometers before the Pakwach Bridge to not miss the magnificence of a place that looks out on the majestic Albert Nile.



TILENGA SAFARI LODGE

